

# The Costa Series

Vent Free Gas Log Heaters

## Montebello

24" Shown



Superior design, performance and features together with true, wood-burning realism hallmark the most innovative, most advanced hearth products ever available. Only from Design Dynamics.





# Innovation on fire

It isn't often that a product line offers looks, features, performance and quality at a level to lead an entire industry in virtually every category. The Costa Series™ from Design Dynamics™ presents this rare opportunity with the beautiful new Montebello Vent Free Gas Log Heater.

## Dramatic Realism

The Montebello's intricately detailed, mature fire log stack and glowing coal bed are painstakingly recreated from an actual wood fire, then hand finished in natural wood tones throughout the deep bark patterns, split wood highlights, and smoked, charred features. The deep, glowing coal bed, is highlighted by an active, flush to the hearth ember bed unique to the industry. The control and gas train assembly are hidden from view to maximize the realistic scene.

## Outstanding Performance

A glowing, loose ember presentation like this in a vent free heater can only be achieved through superior design and nearly perfect fuel combustion. The Montebello's thermostatic, high efficiency, dual burner system maximizes the glowing and heating properties of the ember and ceramic material, achieving the cleanest, most complete burn in the Industry!

## Absolute Safety

You can rest assured that your new Montebello is also the safest vent free gas log heater available. In addition to vent free safety controls and industry-leading, clean flame combustion technology, the log set is unitized in a pre-assembled arrangement. This feature assures maximum performance and eliminates the possibility of log misplacement or movement, which could affect indoor air quality. The control and gas train are 100% factory assembled and tested.

## Instant Enjoyment & Convenience

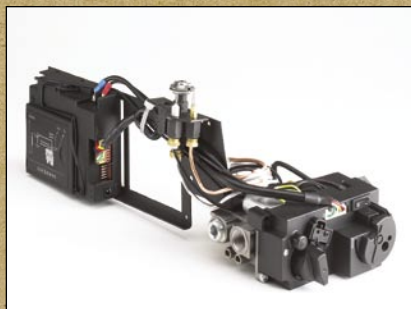
The unitized design also makes installation a breeze! Just complete the gas connection using the shut-off valve and stainless flex connector provided. Like all Design Dynamics' logs, the Montebello doesn't require any break in or "burn off" period, so you can enjoy your new heater instantly, and with the convenience of remote electronic ignition and the comfort of thermostatic operation all from the hand-held control.

## Standard Features:

- Realistic ceramic fiber log set and ember bed; unitized to assure safety, performance, and ease of installation.
- Proprietary, Ceramat® ember bed material for the safest, most realistic loose ember presentation available in a vent free heater.
- Dual flame, high efficiency burner system for realistic look and feel, creates active, colorful flame presentation and plenty of glowing embers and coals.
- Electronic ignition.
- Thermostatic heater control
- Hand-held, multi function radio frequency remote control
- Decorative log scraps, and lava floor cinders complete the custom hearth presentation.
- 99% heating efficiency.
- Fully assembled gas train assembly; concealed to maximize realism.



Solid, unitized log arrangement is intricately detailed.



Gas train/control assembly is fully assembled and factory tested.



Standard feature components

Log Size	Minimum Firebox Size		
	Height	Depth	Front Width
18"	20"	14"	35"
24"	17"	14"	28"

Model #	Size	Fuel	BTU/Hr.
VF-18N/P-MHD	18"	NG/LP	24-36,000
VF-24N/P-MHD	24"	NG/LP	25-39,000



www.innovationonfire.com  
For more information,  
call (888) 880-1213

